

COCA-COLA FOUNTAIN EQUIPMENT BULLETIN..... SERVICE

DATE : 09/03/04

NUMBER : SERV - #195

SUBJECT : ABS Lift Cylinder Sensor Diagnosis

The current switch bracket on the lift cylinder may compress the switch between the bracket and cylinder causing the contactors inside the switch to bind. A new switch bracket has been created which is not subject to this compression.

If you are diagnosing a lift cylinder sensor failure, look for the following:

- 1) Is the switch bracket the old (Figure 1) or the new (Figure 2) configuration?
- 2) Binding can occur on the old switch when the bracket warps (Figure 3) and the switch comes in direct contact with the cylinder. Warping is caused by over-tightening the screws on the bracket. If you have an old switch bracket, make sure that there is a gap between the switch and cylinder. You can do this using a dollar bill or similar small piece of paper (see Figure 4)

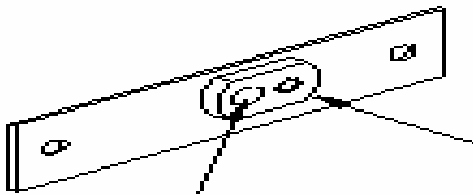


Figure 1: old switch bracket

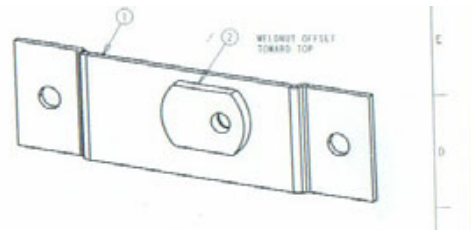


Figure 2: new switch bracket



Figure 3: warped switch bracket



Figure 4: checking for space between the switch and the cylinder

FOR ADDITIONAL INFORMATION CONTACT :
Bruce Fricks: 404-676-6831, David Jensen: 404-676-1168
Or Dean Budd 404-515-0023

COCA-COLA NORTH AMERICA... FOR INTERNAL USE ONLY