

Getting Started – Testing the ABS Machine

1. Turn off the ABS Machine
 2. Connect the cable from the tool to the ABS machine
 3. Turn the ABS Machine back on. Make sure the ABS Machine is ready to take an order.
 4. Now switch the tool on. The Power LED will illuminate.
 5. Press the Order button to place the first order in the list.
 6. If the communication was successful the OK LED will illuminate.
 7. If there was an error in communication the Error LED will illuminate.
- *If you want to reset the tool and the ABS machine press the Reset button.

Getting Started – Testing the 100' POS Cable

1. Turn off the ABS Machine
 2. Connect the cable from the tool to the POS cable, usually located in the manager's office.
 3. Turn the ABS Machine back on. Make sure the ABS Machine is ready to take an order.
 4. Now switch the tool on. The Power LED will illuminate.
 5. Press the Order button to place the first order in the list.
 6. If the communication was successful the OK LED will illuminate.
 7. If there was an error in communication the Error LED will illuminate.
- *If you want to reset the tool and the ABS machine press the Reset button.

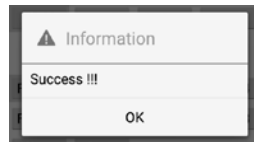
Getting started with the Mobile Application

1. Download the mobile application to your Android device. It is available in the Google Play Store as “ABS TOOL.” (iOS app will be available soon)

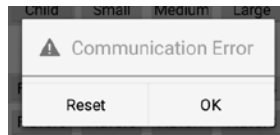
You can use this QR Code to quickly download the Android App



2. Ensure your mobile device’s Blue Tooth is enabled and that the ABS Test Tool is ON prior to launching the application. Launch the application and it will automatically search and connect to the tool.
3. If the application cannot find the tool, click “Rescan.” If the application still can’t connect, power off the tool, close the app and start again.
4. The application has Four cup sizes, Ten Flavor selections and Four Ice selections. Select a Cup size, Flavor and Ice and click “Order” to place this order.
5. If the operation is successful, the app will notify you with a message stating the communication was a success and the tool’s OK LED will be illuminated.



6. If there is a communication error, the application will notify you with a message stating a “Communication Error” with an option to either Reset the Tool and ABS or Ignore the error message by pressing “OK.” The tool’s Error LED will illuminate.



7. Pressing the “Clear All” Button will clear all of the selections.

